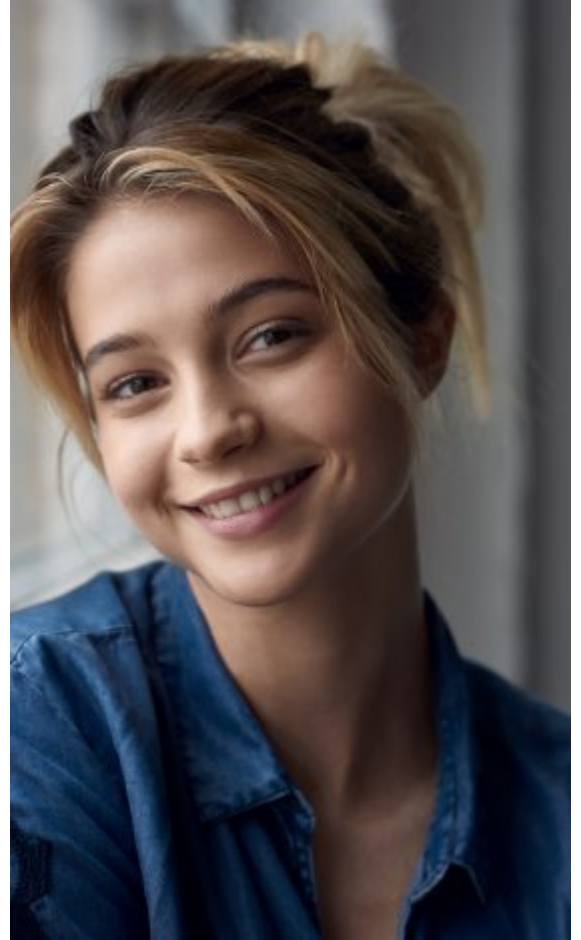


LISA-MARIE KOROLL | BIOGRAPHY



## Lisa-Marie Koroll | CV

### FEATURE | TELEVISION

- 2019 | **Es ist zu deinem Besten** | feature film | Director: Marc Rothemund | Koryphäen Film
- 2019-2018 | **Wir sind Jetzt** | TV series | Director: Christian Klandt | Producers at Work
- 2019 | **Takeover - Voll Vertauscht** | feature film | Director: Florian Ross | Pantaleon Films
- 2019 | **Aus Haut & Knochen** | TV movie | Director: Christina Schiewe | Rowboat Film- und Fernsehproduktion | Sat1
- 2018 | **Misfit** | | Director: Erwin van den Eshof | Splendid Film, NewBe
- 2018 | **Abikalypse** | feature film | Director: Adolfo Kolmerer | Pantaleon Films
- 2018-2006 | **Familie Dr. Kleist** | TV series | Director: diverse | Polyphon Film | ARD
- 2017 | **Taunuskrimi - "Im Wald"** | TV series | Director: Marcus O. Rosenmüller | all-in-production | ZDF
- 2017 | **Heilstätten** | feature film | Director: Michael David Pate | 20th Century Fox/ Schmerbeck Filmproduktion
- 2017 | **Die jungen Ärzte - "Zwei linke Hände"** | TV series | Director: Jan Bauer | ARD
- 2016 | **Bibi & Tina: Tohuwabohu total** | feature film | Director: Detlev Buck | Boje Buck Produktion, DCM Film
- 2015 | **Bibi & Tina: Mädchen gegen Jungs** | feature film | Director: Detlev Buck | Boje Buck Produktion, DCM Film
- 2014 | **Bibi & Tina: Voll verhext** | feature film | Director: Detlev Buck | Boje Buck Produktion, DCM Film
- 2013 | **Bibi & Tina: Der Film** | feature film | Director: Detlev Buck | Boje Buck Produktion, DCM Film

# Lisa-Marie Koroll

## PERSONAL DATA

Languages: German (mother tongue), English (fluent)

Place of Birth: Eisenach

Residence: Berlin

Year of Birth: 1997

Height: 1.68m (5' 6.1")

Hair: brown

Eyes: brown

Training: Sigrid Andersson Coaching

Dance: standard dance

Sports: horse riding, skiing, yoga, diving

Driving licence: car (B)