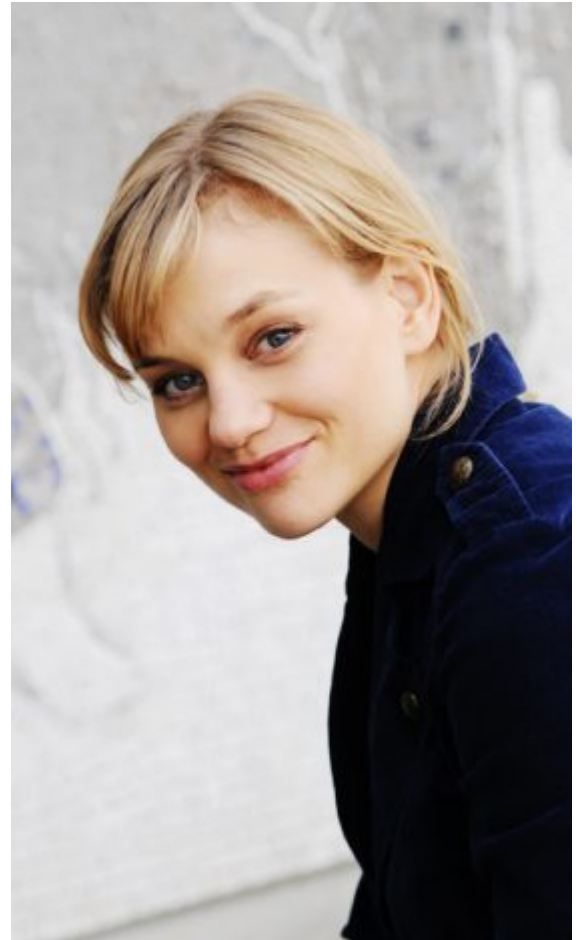


LISA WERLINDER | BIOGRAPHY

In a career that spans stage, screen and television, Lisa Werlinder has become renowned for tackling challenging roles and for her powerful and versatile performances. She has been working with Academy Award -winning directors Steven Spielberg, Ingmar Bergman and Bille August. Her performance as Maria in the highly acclaimed and Award-winning Danish film *THE INHERITANCE*, directed by Per Fly, was hailed by the critics and earned her a nomination for the Danish Academy Award. *TIME Magazine* described her as “a marvel – shifting from playful to vulnerable to fierce in a matter of seconds”. Lisa Werlinder was directed by director Bille August in *A SONG FOR MARTIN*, Academy Award nominee Colin Nutley in *GOSSIP* and Steven Spielberg in *MUNICH*, which was nominated for 5 Academy Awards.

She featured in the internationally acclaimed drama *THE BLACK PIMPERNEL* by Ulf Hultberg, the Norwegian thriller *TORPEDO* by Trygve Allister Diesen, *DOUBLESHIFT* by Maria Essén, *ALMOST PERFECT* by Bertha Pan and *A MIDSUMMER COMEDY* by Ian McCrudden among other films. Upon graduating from the Swedish Theatre Academy, Lisa Werlinder was immediately picked by Ingmar Bergman to work with him at the prestigious Royal Dramatic Theatre in Stockholm. On stage she has portrayed Cordelia in *KING LEAR*, Honey in *WHO'S AFRAID OF VIRGINIA WULF*, Lulu in *SHOPPING AND F***ING*, Eleonora in *EASTER* and Ofelia in *HAMLET* amongst other parts.

IMDb Pro and IMDb



Lisa Werlinder | CV

FEATURE | TELEVISION

2020-2018 | **Unter anderen Umständen** | TV series | Director: Judith Kennel | Network Movie | ZDF
2020-2018 | **Badehotellet** | TV series | Director: Fabian Wullenweber | Danish National TV2 | season 5-8
2016 | **Dicte** | TV series | Director: Kasper Gaardsøe | Miso Film
2015 | **Soko Köln - "Nach so vielen Jahren"** | TV series | Director: Andi Wecker | Network Movie | ZDF
2015 | **Einer für alle, alles im Eimer** | TV movie | Director: Maurus vom Scheidt | Akzente Film | ZDF
2015 | **in/out** | short | Director: Olivier Guerpillon | DFM
2014 | **Einmal Hallig und zurück** | TV movie | Director: Hermine Huntgeburth | Brainpool TV | ARD
2013 | **Tatort - "Borowski und der brennende Mann"** | TV series | Director: Lars Kraume | Studio Hamburg | NDR | guest star
2012 | **Shoo Bre** | feature film | Director: Django Esmer | Acne Film | female lead
2011 | **Alle för én** | feature film | Director: Rasmus Heide | Fridthjof Film
2011 | **Almost Perfect** | feature film | Director: Bertha Bay-Sa Pan | Almost Perfect Film, Slew Pictures
2011 | **Freilaufende Männer** | TV movie | Director: Matthias Tiefenbacher | Colonia Media | WDR
2010 | **Wallander - "The Witness"** | TV series | Director: Kathrine Windfeld | Yellow Bird Pictures | DR, Degeto Film | guest star
2010 | **Swedish Midsummer Comedy** | feature film | Director: Ian McCrudden | Casa Nova Film | female lead
2008 | **Z Rock** | TV series | Director: Mark Farrell | Independent Film Channel (IFC)
2007 | **The Black Pimpernel** | feature film | Director: Ulf Hultberg | Moviefan
2007 | **Torpedo** | TV mini-series | Director: Trygve Allister Diesen | Nordisk Filmprod.
2007 | **En Riktig Jul** | TV series | Director: Simon Kaijser | SVT Drama
2006 | **Karringen där Nere** | feature film | Director: Ragnar di Marzo | Orkano
2005 | **Double Shift** | feature film | Director: Maria Essén | Film i Väst
2005 | **Munich** | feature film | Director: Steven Spielberg | DreamWorks SKG | Universal Pictures
2005 | **Salton** | TV series | Director: Carin Mannheimer | GotaFilm
2005 | **Hon och Hannes** | TV series | Director: Bjarni Thorson | Jarowskij
2003 | **Inheritance** | feature film | Director: Per Fly | Zentropa Entertainments | female lead
2003 | **Skeppsholmen** | TV series | Director: Simon Kaijser, Mikael Marcimain | SVT Drama
2002 | **Olivia Twist** | TV series | Director: Jonas Cornell | SVT Drama
2001 | **A Song for Martin** | feature film | Director: Bille August | Moonlight Filmprod.
2001 | **Gossip** | feature film | Director: Colin Nutley | Sweetwater
2000 | **The Eliminators** | feature film | Director: Mikael Hylin | Jarowskij Film

STAGE

2017 | **Bläck eller Blod** | theatre | Director: Alexander Öberg | Riksteatern, Sweden
2011 | **Brollopet** | theatre | Director: Dritëro Kasapi | Stockholms Stadsteater
2011 | **Leva Livet** | theatre | Director: Philip Zandén | China Teatern
2010 | **Hamlet** | theatre | Director: Katrine Wiedemann | Stockholms Stadsteater
2009 | **Shopping and F***ing** | theatre | Director: Hugo Hansén | Stockholms Stadsteater
2008 | **Who's afraid of Virginia Wolf** | theatre | Director: Sofia Juphiter | Stockholms Stadsteater
2004 | **King Lear** | theatre | Director: Stefan Larson | The Royal Dramatic Theatre
2002-2000 | **Maria Stuart** | theatre | Director: Ingmar Bergman | The Royal Dramatic Theatre

AUDIO

2012 | **Ice Age 4** | audio | Director: Steve Martino | FOX

AWARDS

L'Oréal Paris Rising Star Award Stockholm Film Festival, 2008

Best Leading Actress in "Inheritance", The Danish Critics Association Award - Bodil Award, 2003

Lisa Werlinder

PERSONAL DATA

Languages: Swedish (mother tongue), English (fluent), German (good), Danish, Russian (basic)

Place of Birth: Sweden

Residence: Stockholm

Height: 1.73m (5' 8.1")

Hair: fair

Eyes: blue

Pitch of the voice: mezzo soprano

Musical instruments: saxophone, piano, flutes, bass, drums, guitar

Dance: tap-dance

Sports: horse-riding, roller-skating, skiing, stage-fencing