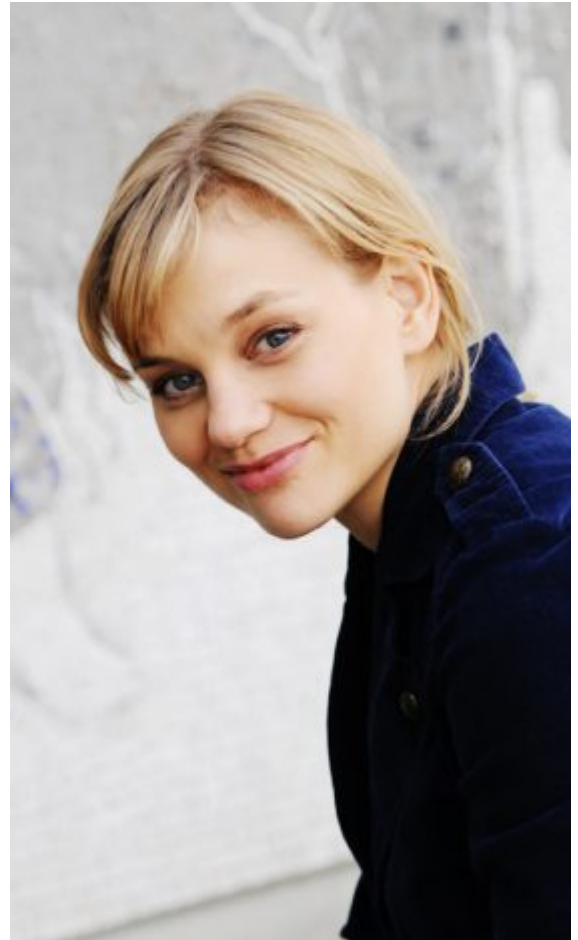


## LISA WERLINDER | BIOGRAPHY

In a career that spans stage, screen and television, Lisa Werlinder has become renowned for tackling challenging roles and for her powerful and versatile performances. She has been working with Academy Award -winning directors Steven Spielberg, Ingmar Bergman and Bille August. Her performance as Maria in the highly acclaimed and Award-winning Danish film *THE INHERITANCE*, directed by Per Fly, was hailed by the critics and earned her a nomination for the Danish Academy Award. *TIME Magazine* described her as “a marvel &#8211; shifting from playful to vulnerable to fierce in a matter of seconds”. Lisa Werlinder was directed by director Bille August in *A SONG FOR MARTIN*, Academy Award nominee Colin Nutley in *GOSSIP* and Steven Spielberg in *MUNICH*, which was nominated for 5 Academy Awards.

She featured in the internationally acclaimed drama *THE BLACK PIMPERNEL* by Ulf Hultberg, the Norwegian thriller *TORPEDO* by Trygve Allister Diesen, *DOUBLESHIFT* by Maria Essén, *ALMOST PERFECT* by Bertha Pan and *A MIDSUMMER COMEDY* by Ian McCrudden among other films. Upon graduating from the Swedish Theatre Academy, Lisa Werlinder was immediately picked by Ingmar Bergman to work with him at the prestigious Royal Dramatic Theatre in Stockholm. On stage she has portrayed Cordelia in *KING LEAR*, Honey in *WHO&#8217;S AFRAID OF VIRGINIA WULF*, Lulu in *SHOPPING AND F\*\*\*ING*, Eleonora in *EASTER* and Ofelia in *HAMLET* amongst other parts.

IMDb Pro and IMDb



# Lisa Werlinder | CV

## FEATURE | TELEVISION

2018 | **Unter anderen Umständen** | TV series | Director: Judith Kennel | Network Movie | ZDF  
2018 | **Badehotellet** | TV series | Director: Fabian Wullenweber | Danish National TV2 | season 5  
2016 | **Dicte** | TV series | Director: Kasper Gaardsøe | Miso Film  
2015 | **Soko Köln - "Nach so vielen Jahren"** | TV series | Director: Andi Wecker | Network Movie | ZDF  
2015 | **Einer für alle, alles im Eimer** | TV movie | Director: Maurus vom Scheidt | Akzente Film | ZDF  
2015 | **in/out** | short | Director: Olivier Guerpillon | DFM  
2014 | **Einmal Hallig und zurück** | TV movie | Director: Hermine Huntgeburth | Brainpool TV | ARD  
2013 | **Tatort - "Borowski und der brennende Mann"** | TV series | Director: Lars Kraume | Studio Hamburg | NDR | guest star  
2012 | **Shoo Bre** | feature film | Director: Djengo Esmer | Acne Film | female lead  
2011 | **Alle för én** | feature film | Director: Rasmus Heide | Fridthjof Film  
2011 | **Almost Perfect** | feature film | Director: Bertha Bay-Sa Pan | Almost Perfect Film, Slew Pictures  
2011 | **Freilaufende Männer** | TV movie | Director: Matthias Tiefenbacher | Colonia Media | WDR  
2010 | **Wallander - "The Witness"** | TV series | Director: Kathrine Windfeld | Yellow Bird Pictures | DR, Degeto Film | guest star  
2010 | **Swedish Midsummer Comedy** | feature film | Director: Ian McCrudden | Casa Nova Film | female lead  
2008 | **Z Rock** | TV series | Director: Mark Farrell | Independent Film Channel (IFC)  
2007 | **The Black Pimpernel** | feature film | Director: Ulf Hultberg | Moviefan  
2007 | **Torpedo** | TV mini-series | Director: Trygve Allister Diesen | Nordisk Filmprod.  
2007 | **En Riktig Jul** | TV series | Director: Simon Kaijser | SVT Drama  
2006 | **Karringen där Nere** | feature film | Director: Ragnar di Marzo | Orkano  
2005 | **Double Shift** | feature film | Director: Maria Essén | Film i Väst  
2005 | **Munich** | feature film | Director: Steven Spielberg | DreamWorks SKG | Universal Pictures  
2005 | **Salton** | TV series | Director: Carin Mannheimer | GotaFilm  
2005 | **Hon och Hannes** | TV series | Director: Bjarni Thorson | Jarowskij  
2003 | **Inheritance** | feature film | Director: Per Fly | Zentropa Entertainments | female lead  
2003 | **Skeppsholmen** | TV series | Director: Simon Kaijser, Mikael Marcimain | SVT Drama  
2002 | **Olivia Twist** | TV series | Director: Jonas Cornell | SVT Drama  
2001 | **A Song for Martin** | feature film | Director: Bille August | Moonlight Filmprod.  
2001 | **Gossip** | feature film | Director: Colin Nutley | Sweetwater  
2000 | **The Eliminators** | feature film | Director: Mikael Hylin | Jarowskij Film

## STAGE

2017 | **Bläck eller Blod** | theatre | Director: Alexander Öberg | Riksteatern, Sweden  
2011 | **Brollopet** | theatre | Director: Dritëro Kasapi | Stockholms Stadsteater  
2011 | **Leva Livet** | theatre | Director: Philip Zandén | China Teatern  
2010 | **Hamlet** | theatre | Director: Katrine Wiedemann | Stockholms Stadsteater  
2009 | **Shopping and F\*\*\*ing** | theatre | Director: Hugo Hansén | Stockholms Stadsteater  
2008 | **Who's afraid of Virginia Wolf** | theatre | Director: Sofia Juphiter | Stockholms Stadsteater  
2004 | **King Lear** | theatre | Director: Stefan Larson | The Royal Dramatic Theatre  
2002-2000 | **Maria Stuart** | theatre | Director: Ingmar Bergman | The Royal Dramatic Theatre

## AUDIO

2012 | **Ice Age 4** | audio | Director: Steve Martino | FOX

## AWARDS

L'Oréal Paris Rising Star Award Stockholm Film Festival, 2008

Best Leading Actress in "Inheritance", The Danish Critics Association Award - Bodil Award, 2003

# Lisa Werlinder

## PERSONAL DATA

Languages: Swedish (mother tongue), English (fluent), German (good), Danish, Russian (basic)

Place of Birth: Sweden

Residence: Stockholm

Height: 1.73m (5' 8.1")

Hair: fair

Eyes: blue

Pitch of the voice: mezzo soprano

Musical instruments: saxophone, piano, flutes, bass, drums, guitar

Dance: tap-dance

Sports: horse-riding, roller-skating, skiing, stage-fencing